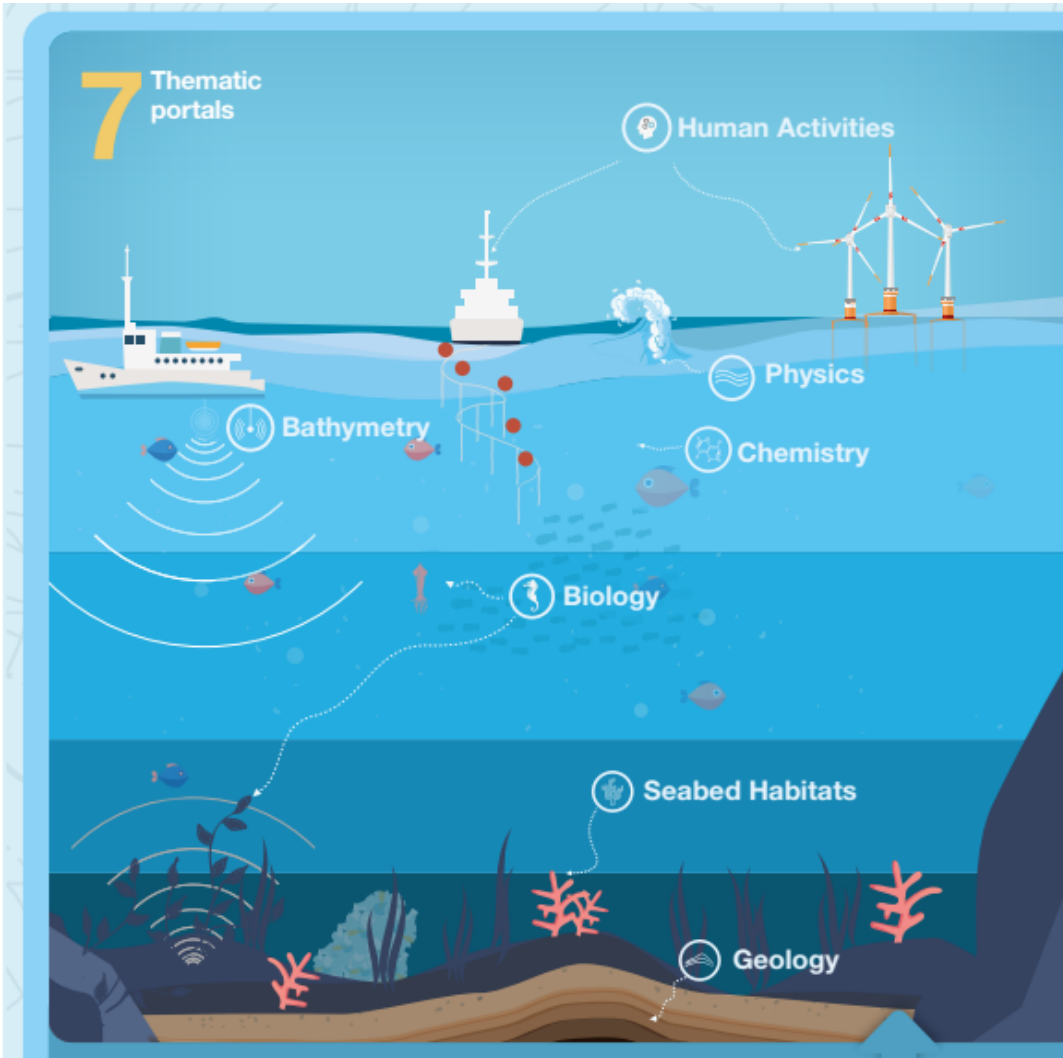


EMODnet: Open Source Marine Data, Digital Products and Services for Europe and beyond

Patrick Gorringe
SMHI/EMODnet Physics/EMODnet
Secretariat

www.emodnet.eu

What is EMODnet?

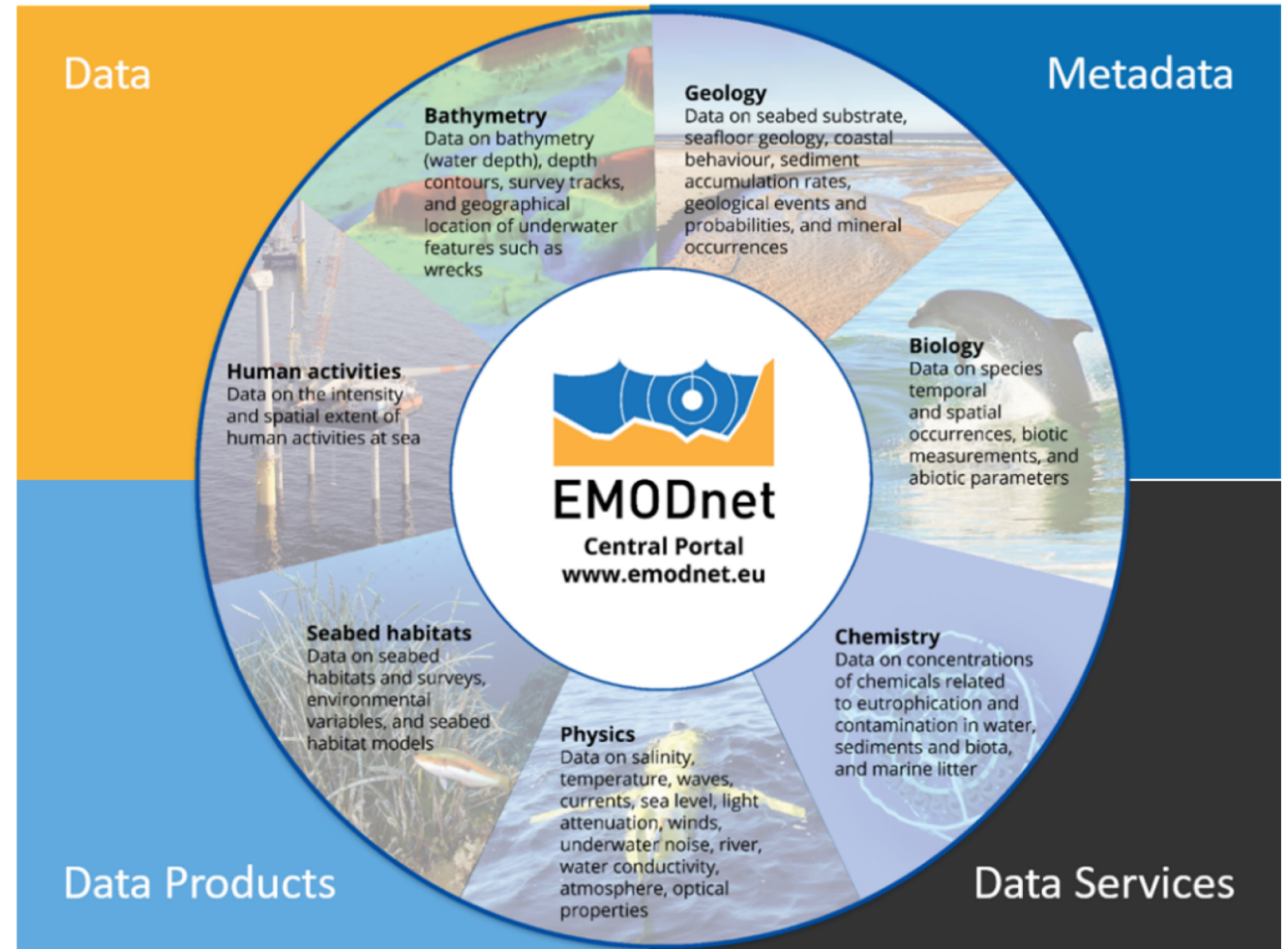
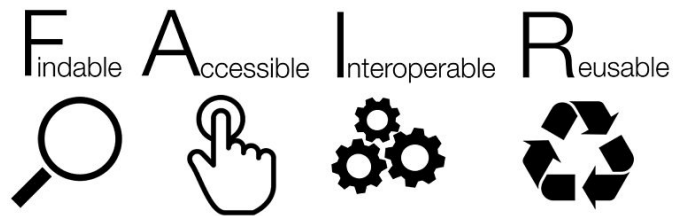


- a **long-term European marine knowledge** initiative funded by the EC (DG MARE);
- **marine knowledge broker**, providing open and free access to marine data, products, services;
- **Large network of >150 organizations, experts & wider community** of data providers and users;
- **Complimentary and aligned to other data services** e.g. Copernicus Marine Service (satellite/remote sensing focus)
- **data & products from the surface to seafloor** (focus on data collected in water *in situ*);
- **7 thematics & central portal & data ingestion & Secretariat**

What is the added value of EMODnet?

Data services and web services to discover **open** and **free access** to data and data products from a **trusted source**

- INSPIRE and FAIR data principles
- Aggregated, harmonized multi-parameter data sets
- Searchable metadata
- Data services (maps, query)
- Integrated data products
- Web services e.g. OGC, machine-machine readability e.g. WMS, WFS, WebS



<https://github.com/EMODnet/Web-Service-Documentation>

What is the added value of EMODnet?

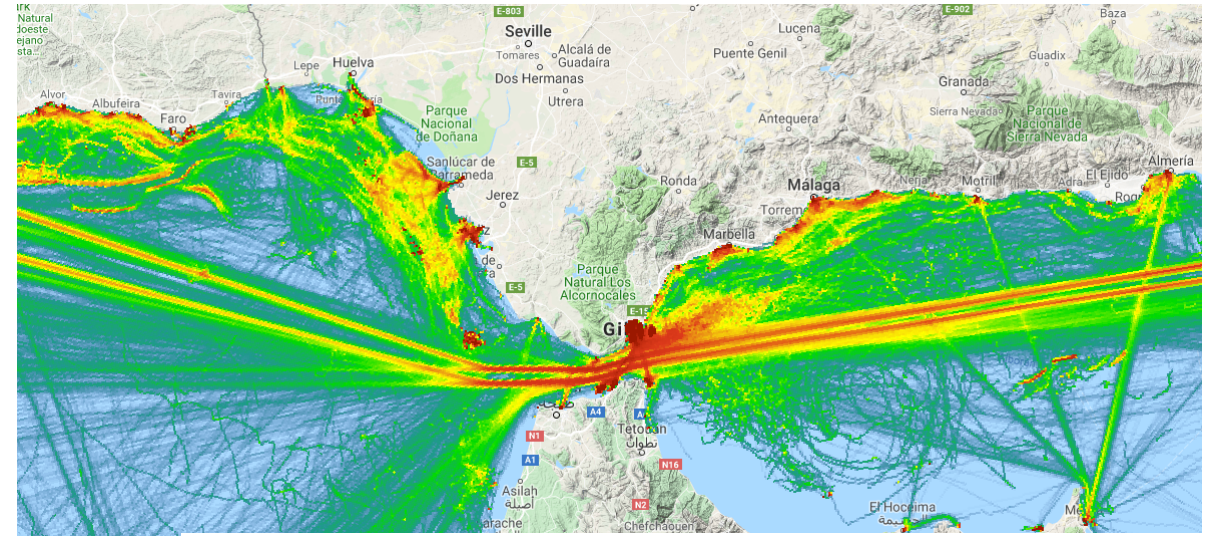
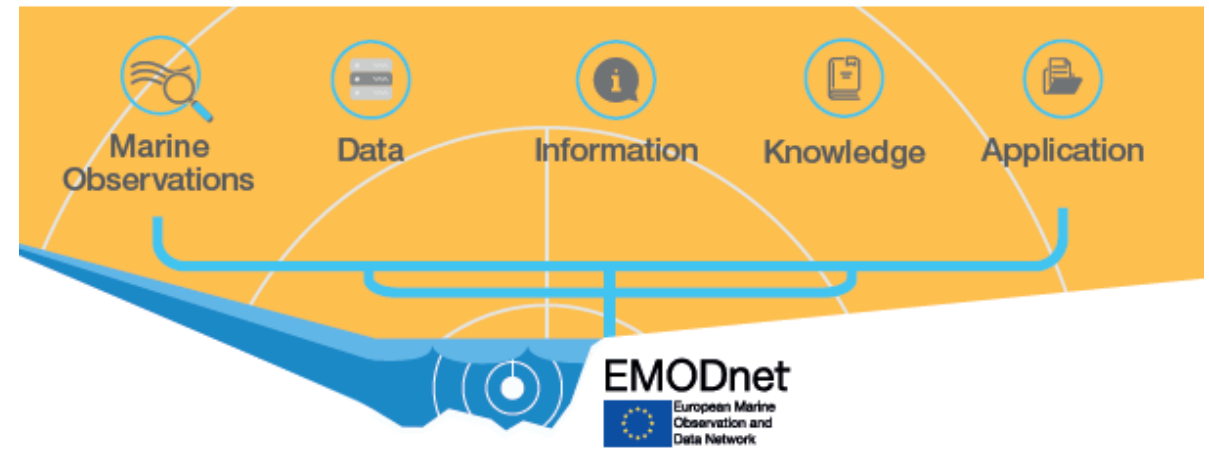
Collect data once, use many times.
Visualize and make data come alive.

- reduce uncertainty;
- increase productivity and cost-effectiveness;
- add value and impact to your data;
- stimulate innovation.

Linking ocean - climate

- EMODnet is offering a public service of "blue" data for the EU Green Deal to meet the targets of EU Climate Pact / Climate Action

From raw data to real-life applications



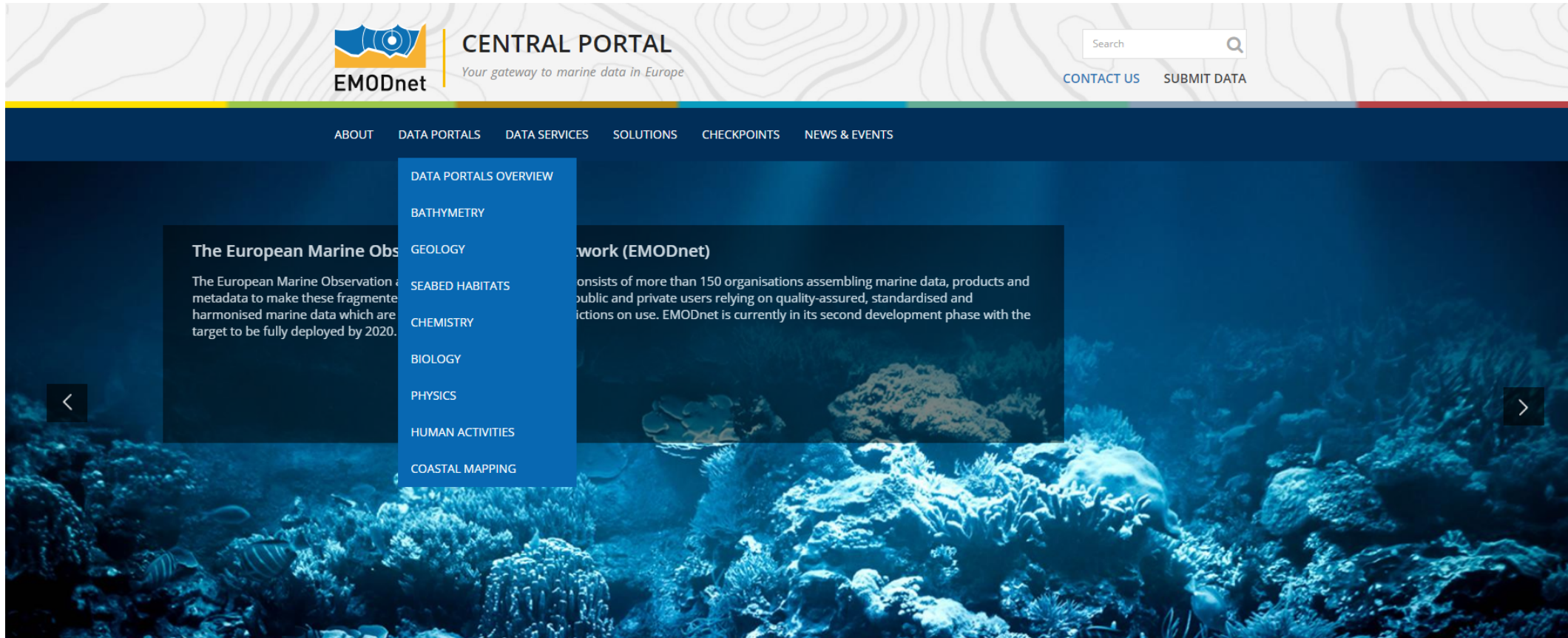
HUMAN ACTIVITIES

Vessel density by EMODnet Human Activities. The map is a grid with 1 square kilometre cells, each with a colour gradient for vessel density.

www.emodnet-humanactivities.eu

The EMODnet Central Portal provides a single point of access to the 7 thematic areas: **Centralisation towards a common map viewer**

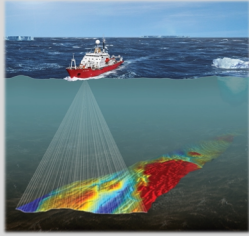






www.emodnet.eu



Discover the EMODnet tutorials to help you find the data and data products you need!

<https://www.emodnet.eu/en/videogallery>

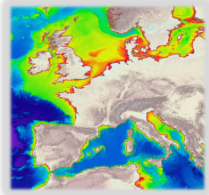
Thematic DATA coverage by the portals

Bathymetry	Geology	Seabed habitats	Physics	Chemistry	Biology	Human activities
						
Survey tracks	Seabed substrate	Seabed habitat maps (broad-scale and specific per basin)	Wave height and duration	Acidity	Occurrences and abundances of species of:	Aggregate extraction
Water depth and depth profiles	Sediment accumulation rates	Individual seabed habitat maps from surveys	Sea temperature	Antifoulants	Phytoplankton	Aquaculture
Undersea features	Seafloor lithology	Environmental variables influencing habitat type (depth, salinity, currents, light, ...)	Wind speed and direction	Chlorophyll	Zooplankton	Cultural heritage
Wrecks	Seafloor stratigraphy	Horizontal speed of the water column	Salinity	Dissolved gases	Macro-algae	Dredging
High resolution bathymetry in coastal areas	Coastal behaviour	Water clarity	Changes in sea level	Fertilisers	Angiosperm	Fisheries
	Geological events and probabilities	Inflow from rivers	Water conductivity / biochemical parameters	Hydrocarbons	Fish	Hydrocarbon extraction
	Mineral occurrences	Water conductivity / biochemical parameters	Atmospheric parameters	Marine litter (micro, beach, seafloor)	Reptile	Traffic in main ports
		Underwater noise	Underwater noise	Heavy metals	Benthos	Ocean energy facilities
				Organic matter	Bird	Pipelines and cables
				Polychlorinated biphenyls	Sea mammal	Protected areas
				Pesticides and biocides		Status of bathing sites
				Radionuclides		Vessel density
				Silicates		Waste disposal (solids)
						Wind farms
						Other forms of area management/ designation



Thematic DATA PRODUCT coverage by the portals

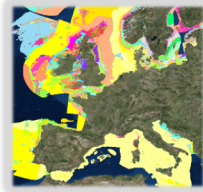
Bathymetry



Digital Terrain Model of:

- Survey tracks
- Water depth and depth profiles
- Undersea features
- Wrecks
- High resolution bathymetry in coastal areas

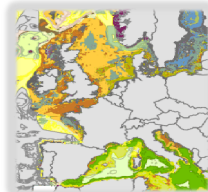
Geology



Maps of:

- Seabed substrate
- Sediment accumulation rates
- Seafloor lithology
- Seafloor stratigraphy
- Coastal behaviour
- Geological events and probabilities
- Mineral occurrences

Seabed habitats



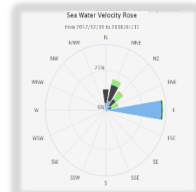
EMODnet broad-scale seabed habitat map for Europe (EUSeaMap)

Confidence maps

Maps of:

- Seabed habitat maps (broad-scale and specific per basin)
- Individual seabed habitat maps from surveys
- Environmental variables influencing habitat type (depth, salinity, currents, light, ...)

Physics



Time series Dynamic plots

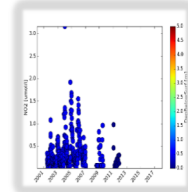
Profiles

Statistics (trends, max, min, average, ...)

Maps of:

- Wave height and duration
- Sea temperature
- Wind speed and direction
- Salinity
- Horizontal speed of the water column
- Water clarity
- Changes in sea level
- Inflow from rivers
- Water conductivity/biogeochemical parameters
- Atmospheric parameters
- Ice cover
- Underwater noise

Chemistry



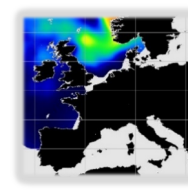
Concentration maps using DIVA software

Dynamics plots

Profiles of:

- Acidity
- Antifoulants
- Chlorophyll
- Dissolved gases
- Fertilisers
- Hydrocarbons
- Heavy metals
- Organic matter
- Polychlorinated biphenyls
- Pesticides and biocides
- Radionuclides
- Silicates
- Marine litter (micro, beach, seafloor)

Biology



Map viewer of:

- Phytoplankton
- Zooplankton
- Macro-algae
- Angiosperm
- Fish
- Reptile
- Benthos
- Bird
- Sea mammal
- Dynamic gridded abundance plots showing geographical variability of species of:
- Benthos
- Birds
- Fish
- Sea mammals
- Micro-organisms
- Physoplankton
- Reptiles
- Zooplankton

Human activities



Map viewer of:

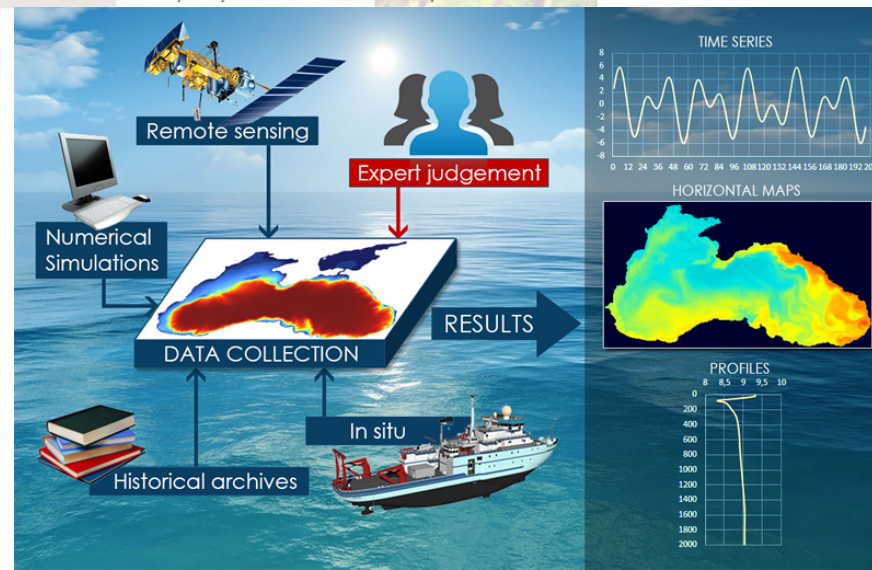
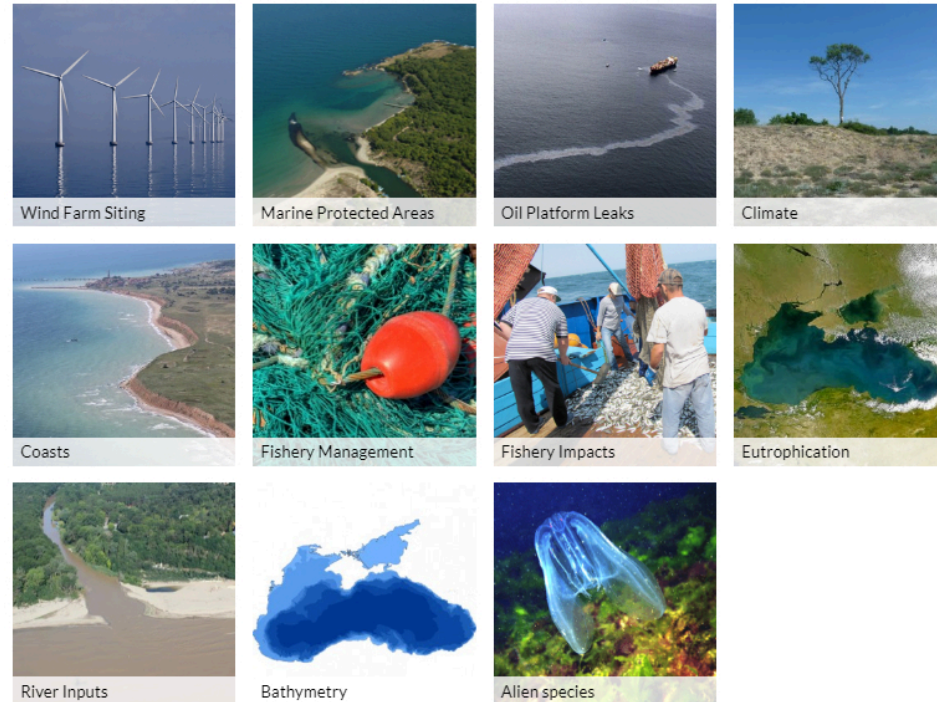
- Aggregate extraction
- Aquaculture
- Cultural heritage
- Dredging
- Fisheries
- Hydrocarbon extraction
- Traffic in main ports
- Ocean energy facilities
- Pipelines and cables
- Protected areas
- Status of bathing sites
- Vessel density
- Waste disposal (solids)
- Wind farms
- Other forms of area management/designation



Sea-basin Checkpoints

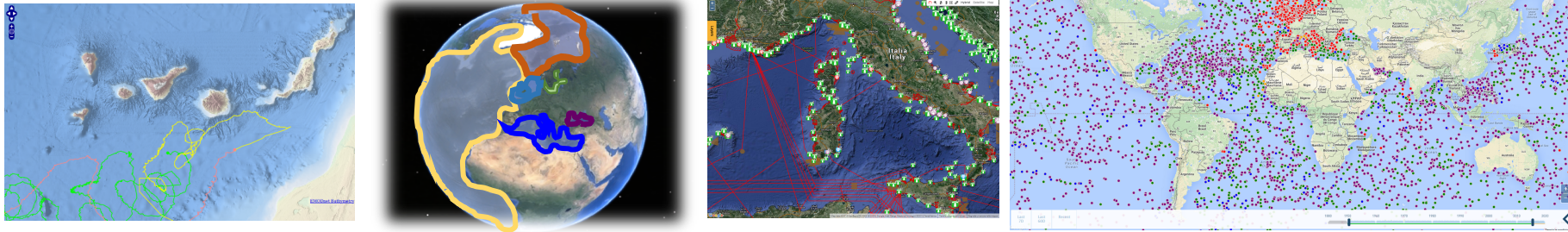
<https://emodnet.eu/en/checkpoints>

- 2013-2018
- By testing the data against specific **end-user challenges**;
- Checkpoints evaluated how well the **current monitoring systems** and data collection frameworks provided data to meet the needs of users;
- Highlighted data **gaps**, **duplications** and **bottlenecks** at sea-basin scale.
- **Climate change** and the related coastal protection/management were common challenges of all Sea-basin Checkpoints.



EMODnet: A decade of achievements – connecting marine data to knowledge

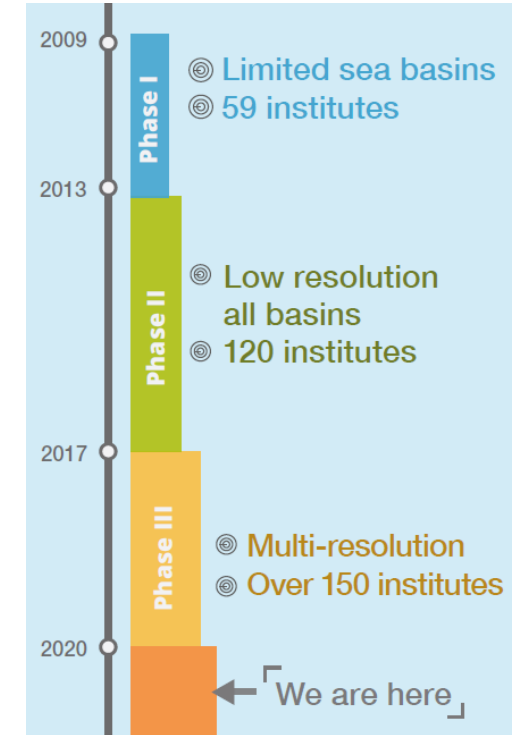
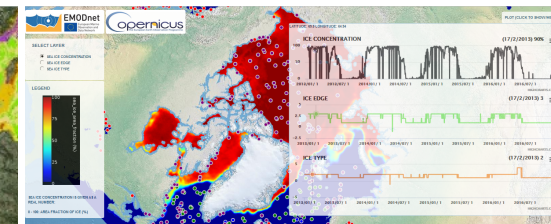
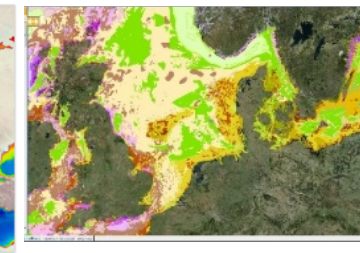
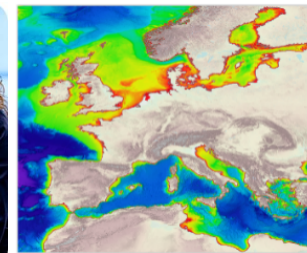
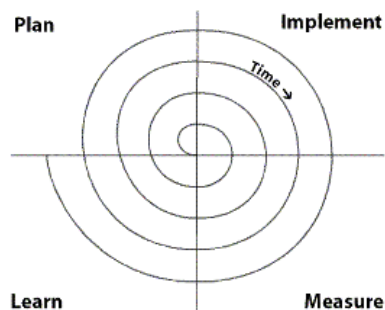
- From *regional* to *pan-European* coverage and onwards to *global* remit



- From *small network* to a *movement* - bringing people & ideas together

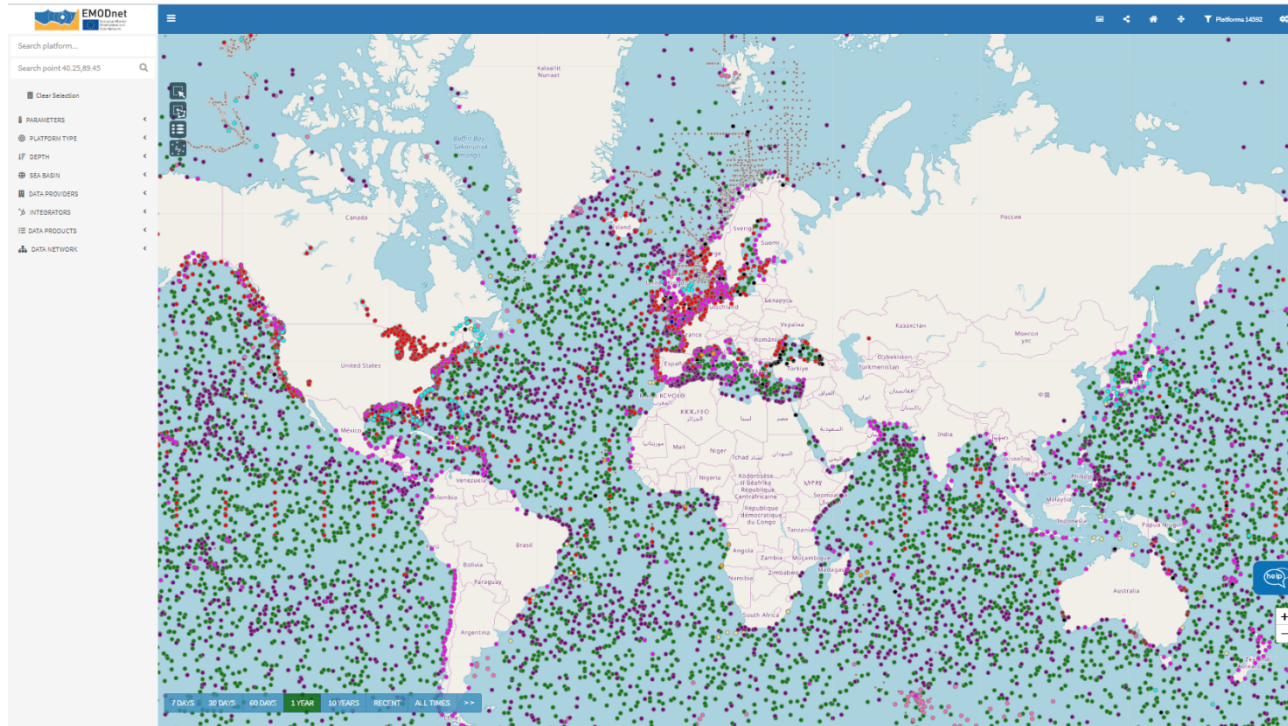


- From *prototypes* to an *operational, mature and user-driven distributed infrastructure*

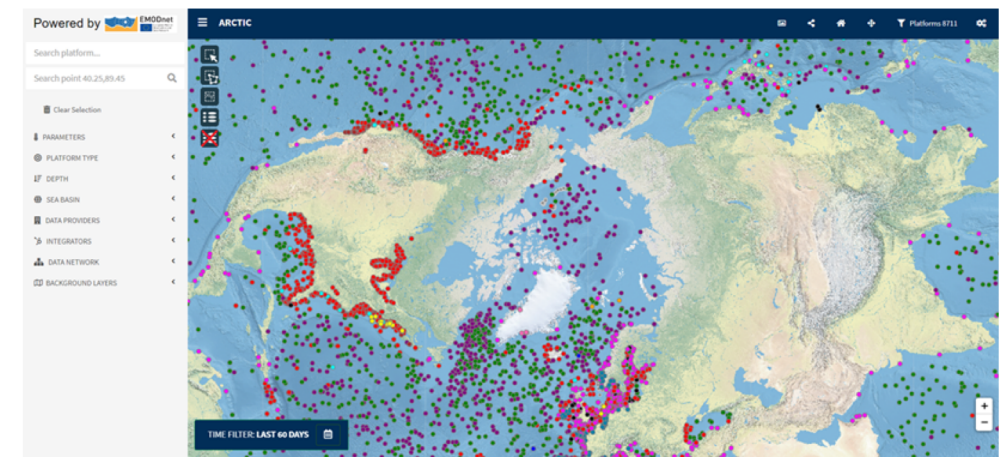
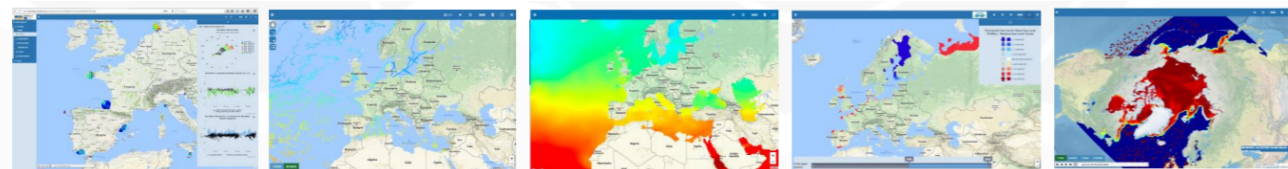


EMODnet: A decade of achievements – connecting marine data to knowledge

EMODnet Physics – global coverage and a service to international communities



- >600,000 global datasets e.g. physics, temperature
- Near real-time data/operational, historical validated data sets, reprocessed data/ products
- Close collaboration with Copernicus Marine Service (CMEMS) *in situ* Thematic Assembly Centre (INSTAC) and EuroGOOS
- New datasets on river runoff, noise, total suspended matter,....
- Connecting to EU marine RI's
- Southern Ocean Observing System (SOOS) interface with centrally-curated circumpolar datasets



EMODnet Physics – global coverage and a service to international communities

CALYPSO - Tà Sopa Nadur

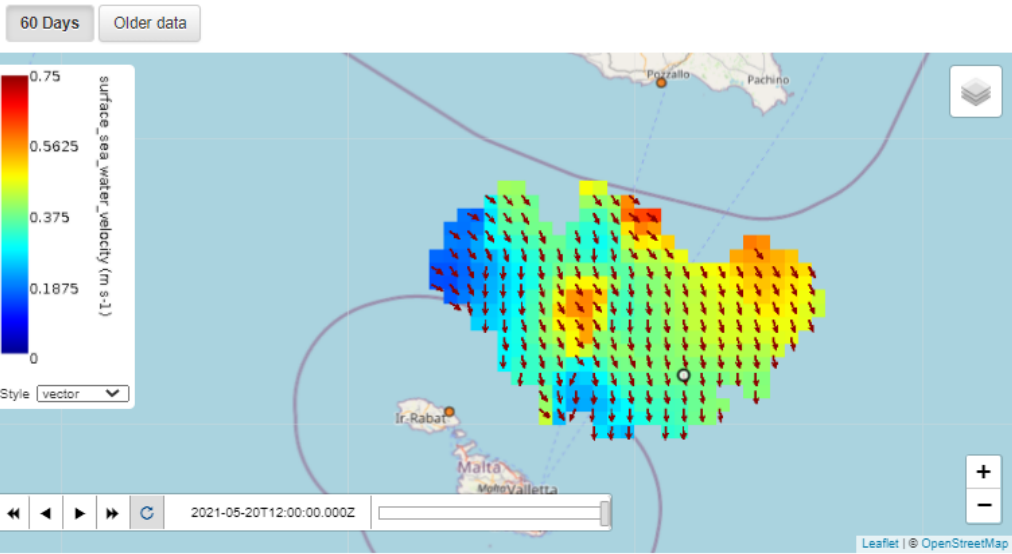


PLATFORM CODE
CALYPSO - Tà Sopa Nadur

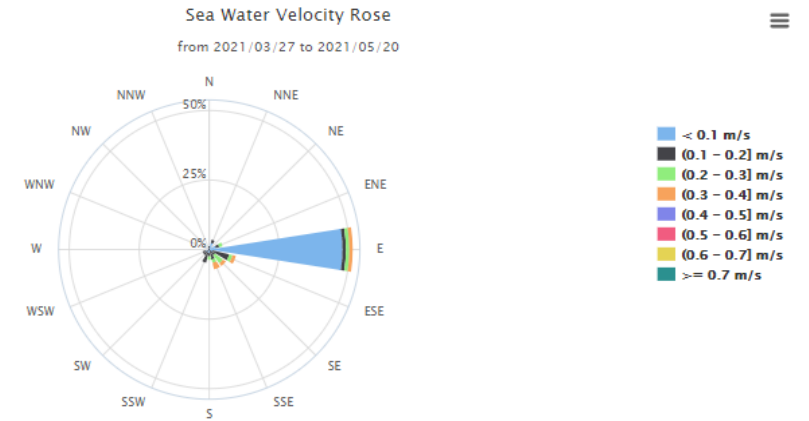
INSTITUTION
UOM - CALYPSO - Dept. of Geosciences,
University of Malta - Malta

ASSEMBLY CENTER
PO-Res.Grp., Univ. of Malta

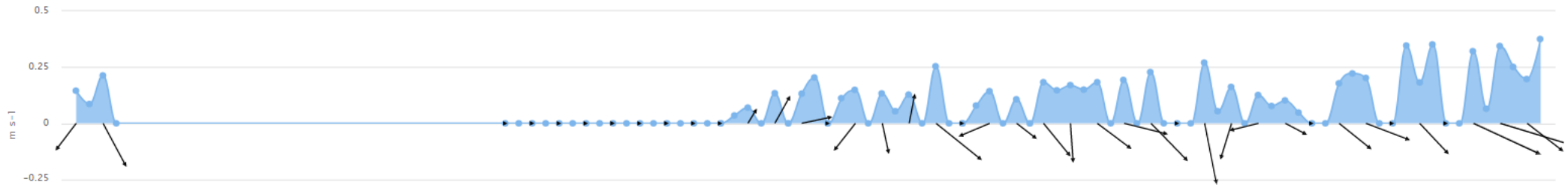
TYPE
Radar



quick download(60 days)
[Download file NetCDF](#) [Metadata](#)
PLOT - Latitude: 36.13 Longitude: 14.88



Sea Water Velocity (m s⁻¹), Direction of Sea Water Velocity (degrees)



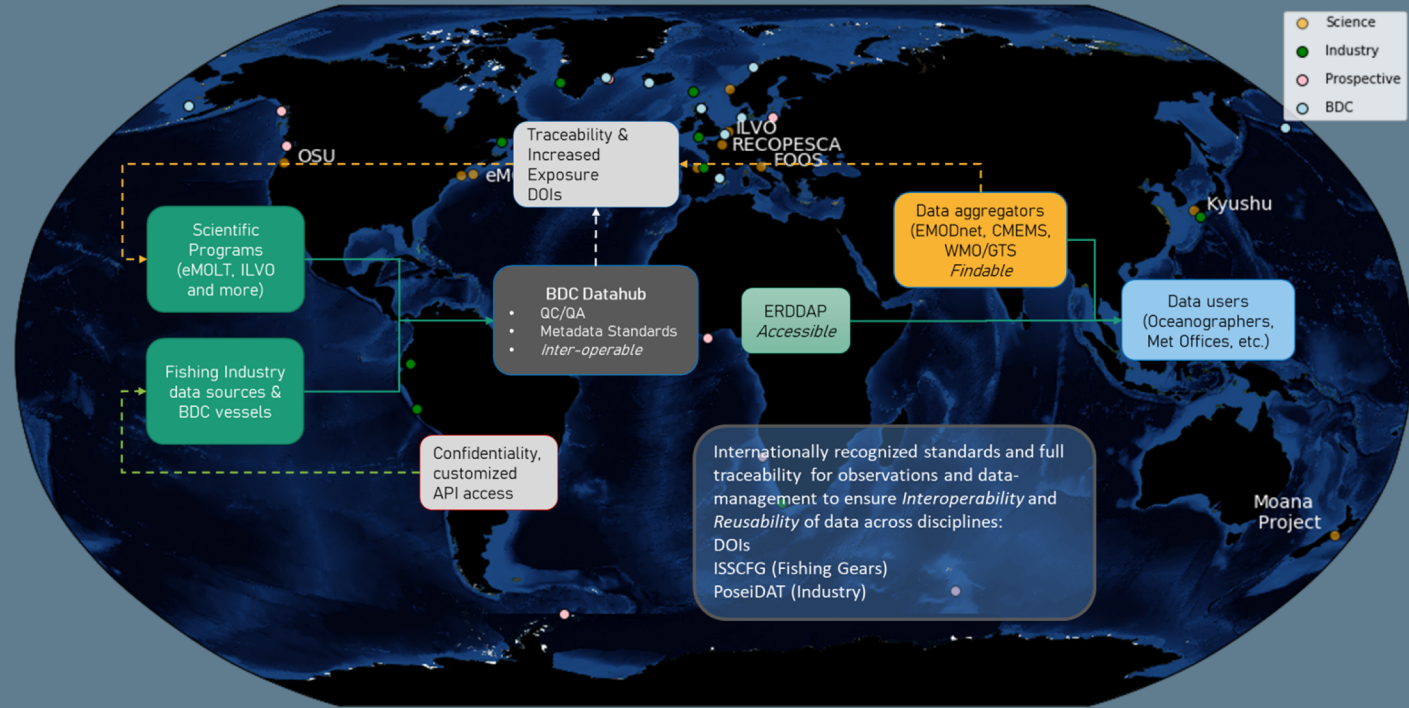
Bringing together diverse ocean observing communities: Fishing for Data

An emerging global network

Both science and industry initiatives.


Interest and momentum from many different sources.

Fishers are up for it!



- **EMODnet physics helps emerging networks to provide a global view, provide global questions and answers, provides support and acting as an integrator and enabler**
- to enhance the cooperation
- increase the accessibility to marine data
- agree on standards, data flow,....


EMODnet Data Ingestion



EMODnet

DATA INGESTION PORTAL

Wake up your data - set them free for Blue Society

[CONTACT](#)

[ABOUT](#)

[DATA SUBMISSION](#)

[GUIDELINES](#)

[SUBMISSIONS](#)

[DATA WANTED](#)

[HELP](#)

[OPERATIONAL DATA](#)

[PROMOTION](#)

[CENTRAL PORTAL](#)

Home

Welcome to the EMODnet Data Ingestion portal

The European Marine Observation and Data Network (EMODnet) consists of more than 160 organisations that together work on assembling, harmonising and making marine data, products and metadata more available to public and private users. This Data Ingestion portal facilitates additional data managers to ingest their marine datasets for further processing, publishing as open data and contributing to applications for society.

[READ MORE](#)



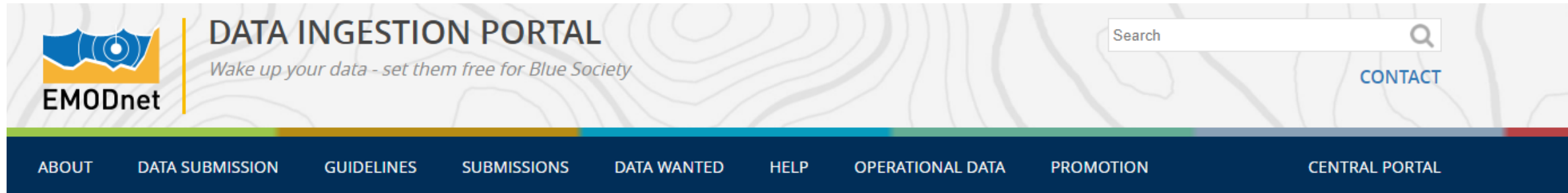
EMODNET INGESTION

CHECK OUT THE MOVIE
3:30 MINUTES



<https://www.emodnet-ingestion.eu/>

EMODnet Data Ingestion



- ① EMODnet Data Ingestion is a component of the present EU marine data management infrastructure
- ① **Identify** potential data sources and data providers
- ① **Reach out** to potential data providers
- ① **Motivate** data providers to participate with their data submissions
- ① Market and promote the Data Ingestion service and its function in the overall EMODnet scheme
- ① Data Centres function as EMODnet ambassadors
- ① Links at all EMODnet portals and other marine data management infrastructures such as CMEMS, SDN,....

EMODnet Data Ingestion

Hello.

My name is XXXX XXXX, and I work in the newly-created Decarbonization group within XXXXX. We have discussed various ways we could **contribute to the understanding and prevention of climate change**, and one such possibility we have identified is to **share** the weather **data collected by 250 of our ocean-going container vessels**. This data is collected every ten minutes and includes the following data points:

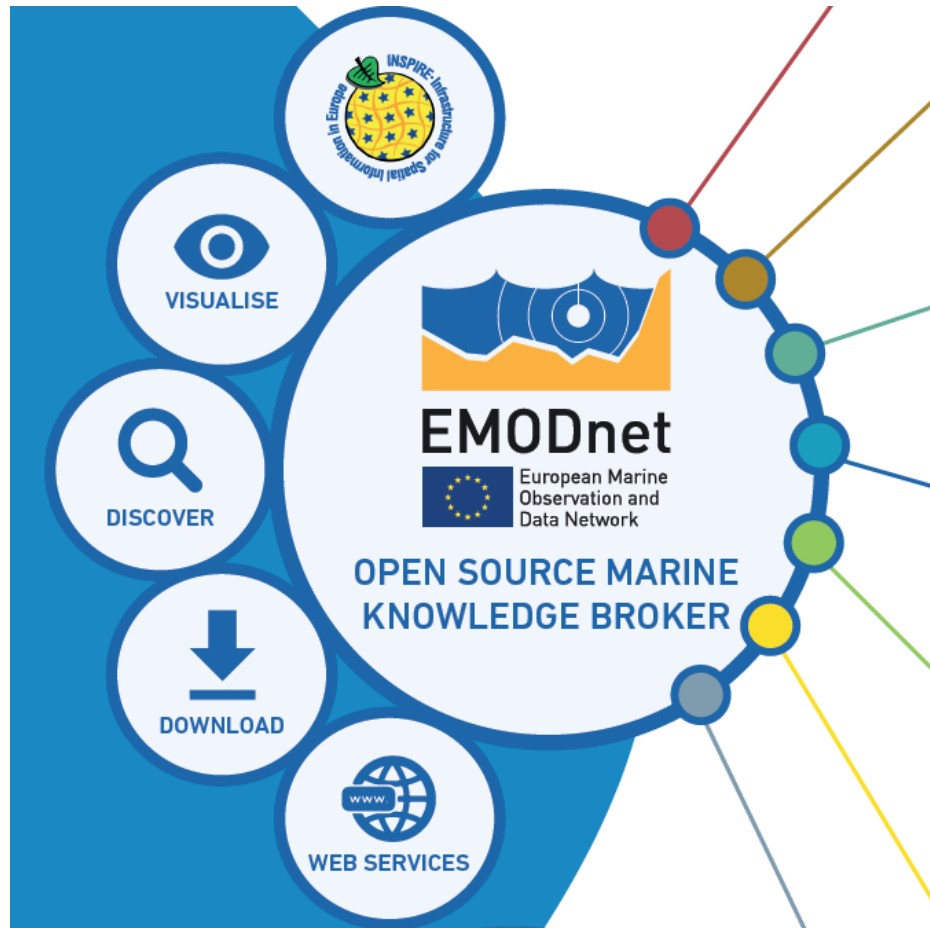
- Position, Ambient sea temperature, Ambient air temperature, Ambient air pressure, Wind speed, Wind direction

We have **26 million observations** already and are adding **13 million observations each year**. The data is already streamed to shore automatically and stored in a central database.

To **aid climate monitoring and research**, XXXXX is considering making this dataset available to the global scientific community **free of charge** if it would **bring value to climate monitoring** and research. Therefore, we'd like to hear whether or not this dataset has sufficient value that you would be interested in including it into your observing system.

Future Outlook: What's next for EMODnet?

Continued evolution of EMODnet, to deliver a fit-for-purpose user-driven service



- **Build on existing capability**, as a long-term European trusted data service;
- **Consolidation, centralisation and Interoperability**;
- **User-driven** with clear, user-friendly interfaces.

Future Outlook *What's next for EMODnet and the wider community?*

EMODnet 2nd Open Conference and Jamboree, 14-16 June 2021



Key themes:

- **EMODnet Partnerships & collaborations:** Data producers, data management services, data and data product users, long-term data initiatives e.g. Copernicus Marine Service (CMEMS);
- **EMODnet for user tracks:** Policy, Industry, Research, Society;
- **EMODnet for Global:** Supporting the UN Decade of Ocean Science, UN 2030 Agenda;
- **Ocean Observing and Data Collection:** including a workshop on European Ocean Observing, 16 June PM

<https://www.emodnet.eu/en/conference2021>

A full week of EMODnet Jamboree for the EMOD-network

European partnerships include:



4 Regional Sea Conventions
OSPAR
HELCOM
UNEP-MAP
Black Sea Convention



Dialogue with European Research Infrastructures, data repositories, projects, for optimizing data sharing and flow e.g.,

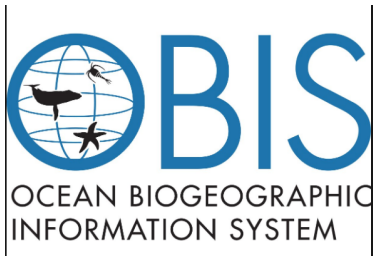


Global context, collaborations & contributions

EMODnet collaborates internationally as an open source data and data product and web services provider, collaborator and contributor of best practice and technical solutions to European and international marine data initiatives:



EMOD-PACE



Global collaborations: Future Outlook

Strengthening Partnerships for International Interoperability and Impact



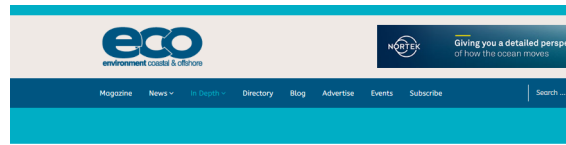
- **EMODnet:** A key partner for Open Data, Open Science and Data diplomacy in Europe, and beyond
- **Interoperable data discovery and access,** in collaboration with other key data services
- **Further diversifying data parameters and sources** (e.g. industry, citizen science)
- **Extending FAIR** to FAIR, CARE and TRUST

Thank you!

- **Discover EMODnet data and data products**
- **Connect with the online EMODnet community @EMODnet (Twitter, LinkedIn and Facebook)**
- **Help shape the future of EMODnet! Join us for the EMODnet Open Conference & Jamboree 14-18 June 2021, Ostend, Belgium**

www.emodnet.eu

info@emodnet.eu



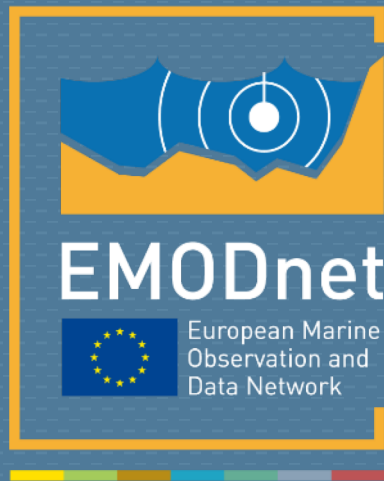
Breaking Borders in Ocean Information: A European Success Story

EMODnet Secretariat | POSTED ON OCTOBER 24, 2020



<https://bit.ly/2IMZAgv>





@EMODnet
www.emodnet.eu

Your gateway to marine data in Europe

